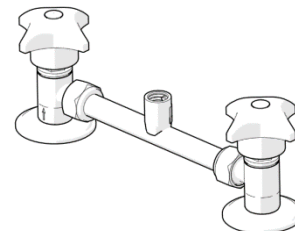


Product Installation Guidelines

Exposed Assembly CP-BS Lead Safe Bath/Shower/Laundry/Sink Sets



PRODUCTS	
Item Code	Description
175.45.00.00	Exposed Assembly CP-BS Lead Safe™ Adjust Body Back Entry with Handles
175.40.00.00	Exposed Assembly CP-BS Lead Safe™ Fixed Body Ceiling Entry with Handles
175.41.00.00	Exposed Assembly CP-BS Lead Safe™ Fixed Body Side/Bottom Entry W/ Handles

SPECIFICATIONS

- Galvin Engineering recommends the installation of strainers and pressure reducing valves prior to installing the exposed shower units to ensure clean consistent water supply. Debris or poor water quality could cause the units to seize or fail to seal.
- Easy to maintain with spare parts readily available.
- The range is ideal for thin walls such as veneer, fibre cement and wood.
- Lead Safe™ brass construction. *

IMPORTANT: All taps are tested in accordance with AS/NZS 3718 and leave our premises in good working order.

*Our Lead Safe™ product range is compliant with the Lead-Free Requirements of the NCC 2022 Vol. Three, Clause A5G4(2) and NSF/ANSI 372.

**Any flow controller incorporated in the outlet to be tightened to prevent removal by hand. As Per AS3718.

WARNINGS: Special attentions to be paid on notes, photos, images, or drawings of assembly steps marked with the warning symbol.



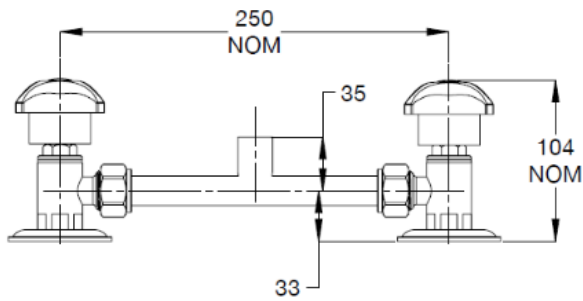
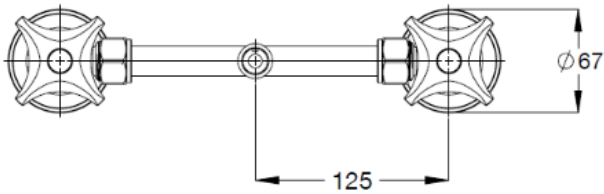
TECHNICAL DATA

Inlet	G ½" - Female	
Outlet	N/A	
Headworks	Jumper Valve	
Working Pressure Range (kPa)	Min	50
	Max	500
Working Temperature Range (°C)	Min	5
	Max	65
Material	Brass	
Finish	Chrome	
NOTE: Galvin Engineering continually strives to improve their products. Specifications may change without prior notice.		

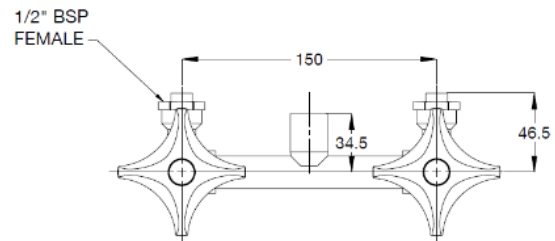
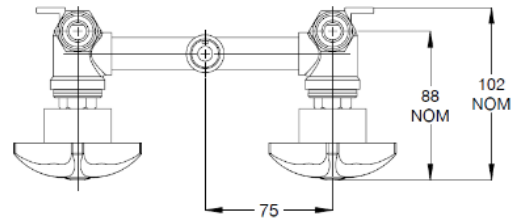
TOOLS REQUIRED

- Hex key

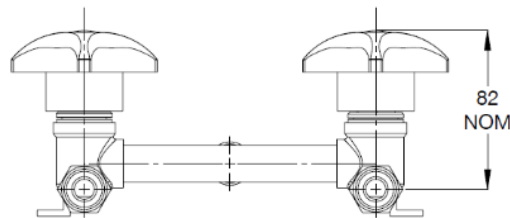
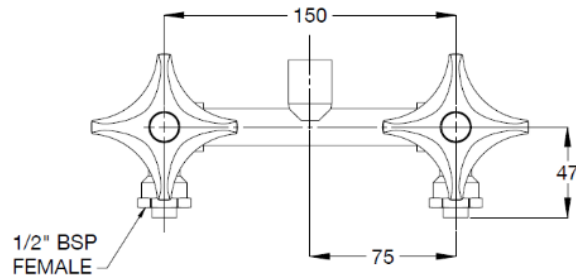
DIMENSIONS



175.45.00.00



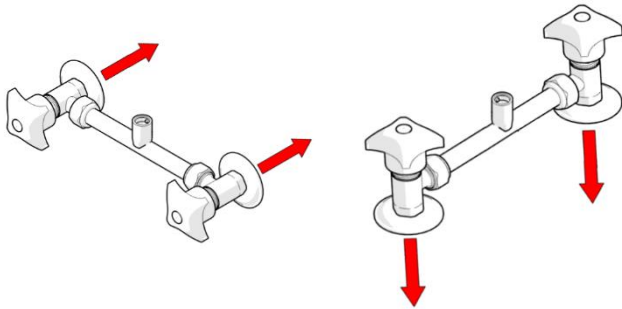
175.40.00.00



175.41.00.00

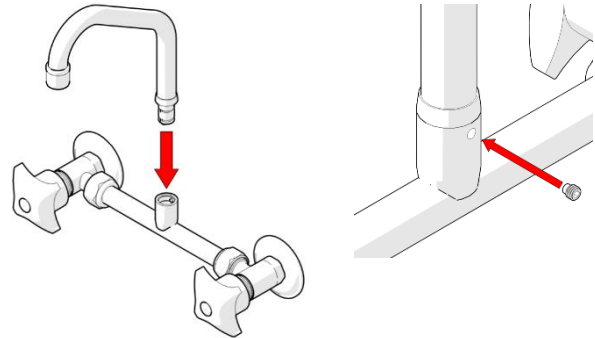
INSTALLATION

INSTALLATION COMPLIANCE: Galvin Engineering products must be installed in accordance with these installation instructions and in accordance with AS/NZS 3500, the PCA and your local regulatory requirements. Water and/or electrical supply conditions must also comply to the applicable national and/or state standards. Failing to comply with these provisions shall void the product warranty and may affect the performance of the product.



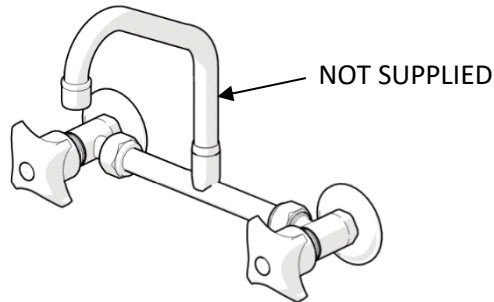
1. Secure body

- Secure body to wall/basin as needed.
- Connect the inlets to the pipework.



2. Fit outlet (not supplied)

- Fit the outlet to the exposed tapware body. Tighten grub screw using a hex key.



3. Test unit

- Once all fittings have been tightened securely, connect the unit to the mains water.
- Turn on water and test the unit for any leaks.

WARRANTY

Galvin Engineering products are covered under our Manufacturer's Warranty. Galvin Engineering products must be installed in accordance with the installation instructions and in accordance with AS 3500 and NCC Volume Three, relevant Australian Standards and local authorities applicable to product being installed. Water and electrical supply conditions must also comply to the applicable national and/or state standards, failing to comply with these provisions may void the product warranty and affect performance of the product.

Please visit www.galvinengineering.com.au to view the full warranty, our Installation Compliance and Maintenance & Cleaning information as well as any other additional information.